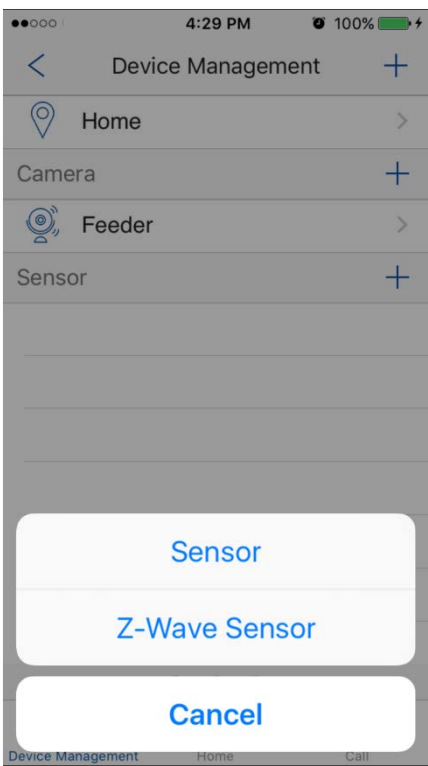




## Add Z-Wave Dongle

This process only applies to Security Shuttle 3.0.

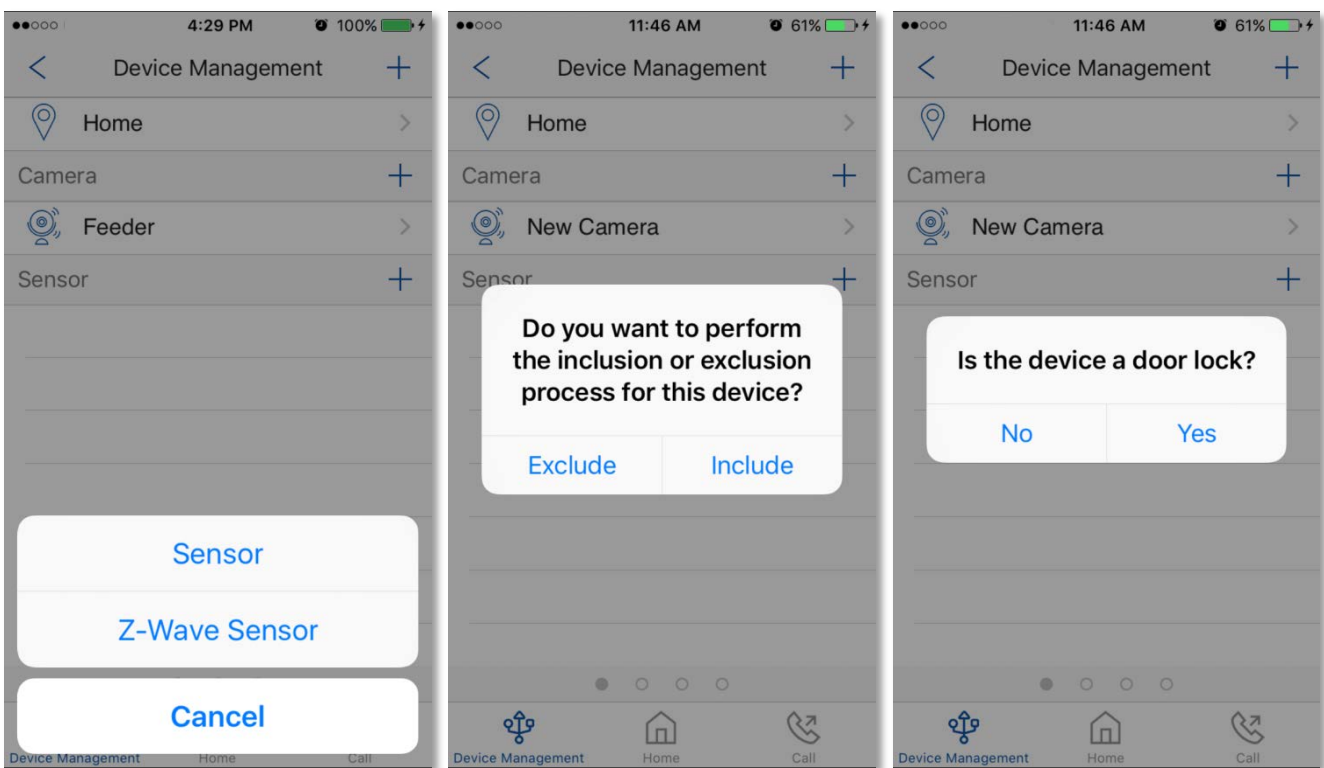
1. Insert the Z-Wave Dongle into the Security Shuttle 3.0.
2. Unplug the power of the Security Shuttle 3.0 and replug it back. There should now be the option to add "Z-Wave Sensor."



## Add Z-Wave Sensor

Adding Door Lock, Smart Plug, Dimmer, etc.:

1. Go to Sidebar Menu -> Device Management.
2. On Sensor tap on (add) button and tap "Z-Wave Sensor." Then choose "Include" on the dialog box.
3. User will see the message: "Is the device a door lock?" Tap "Yes" to add a door lock. For sensors other than the door lock, tap "No." Encryption will be used to add the door lock if tapped "Yes."
4. Follow the instructions to plug in the device to power, press buttons, etc., according to the user manual.
5. Check the device's status in "Device Management" after 10 minutes.
6. After few minutes, if device is added successfully, user will receive a success notification.
7. Device will be listed on Device Management list if added successfully.



Check "Device Management":

