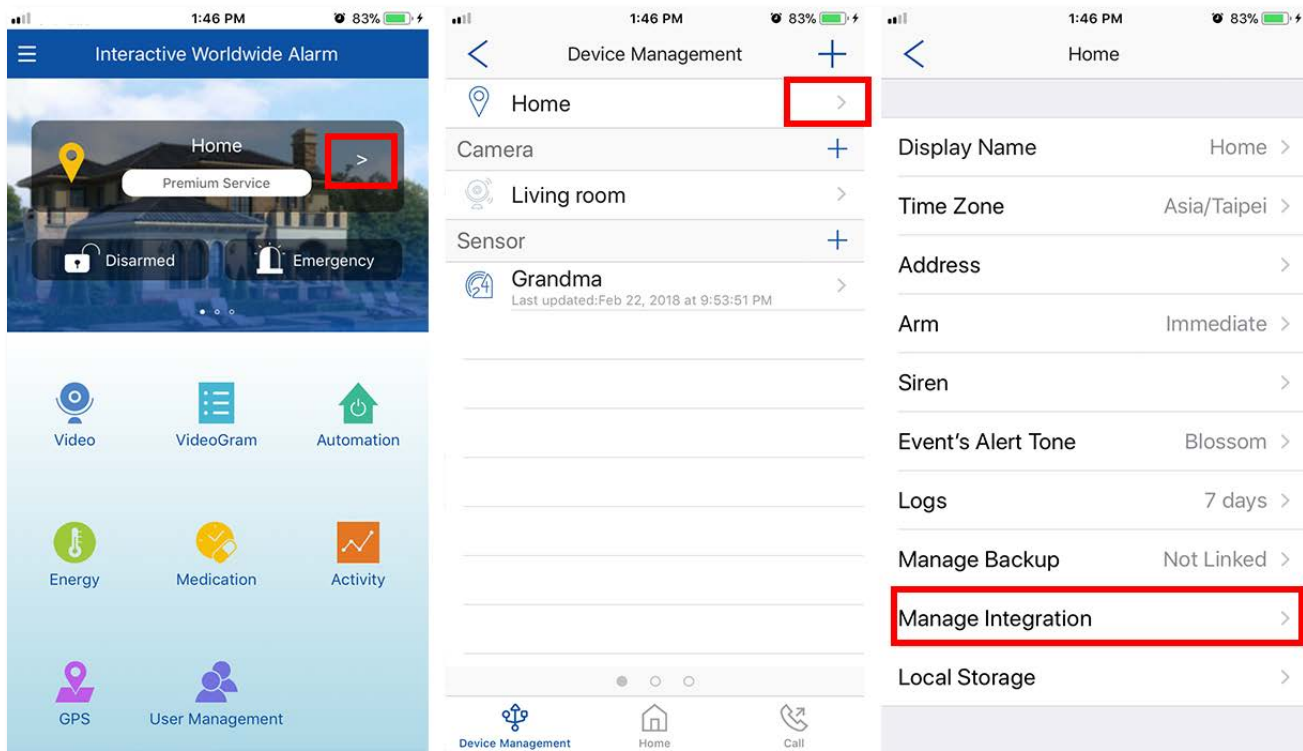




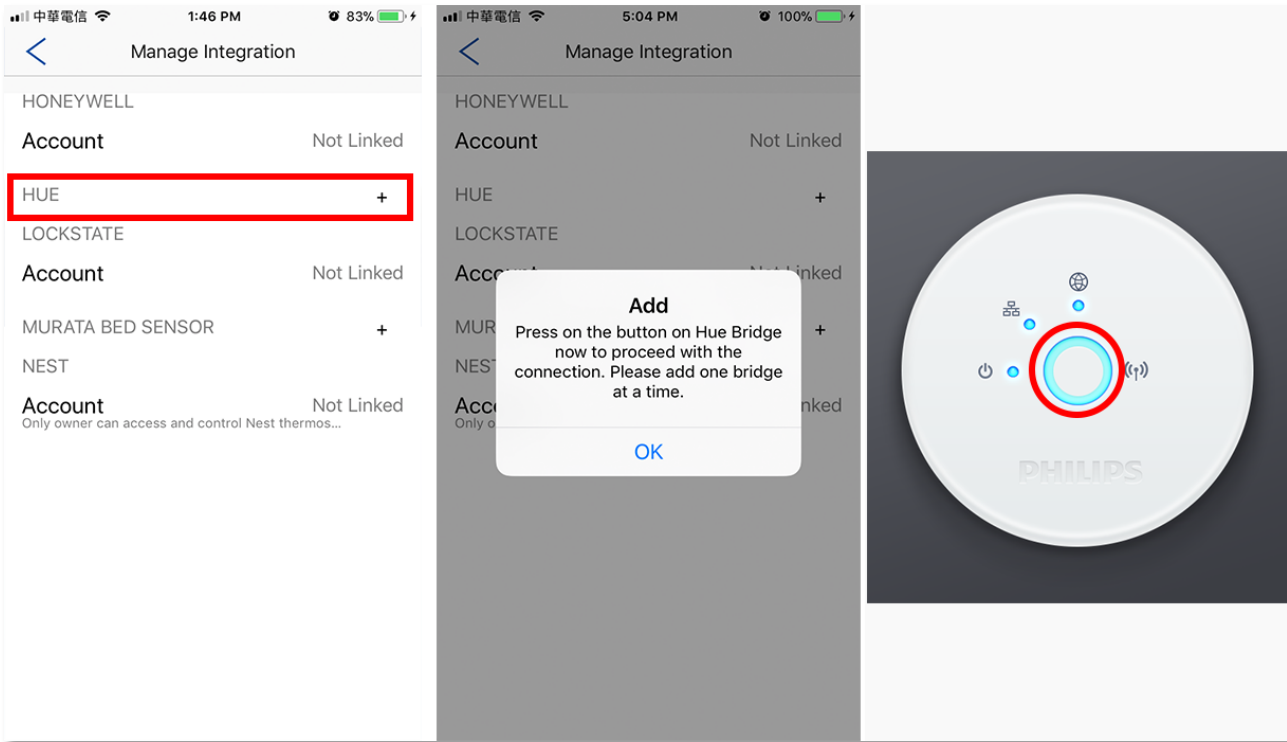
## Pairing with Philips Hue Light System

It's suggested that all devices are paired with the Philips Hue system before integrating with the WWAlarm app. During the pairing process, all devices paired to the Philips Hue system will be transferred to the WWAlarm app.

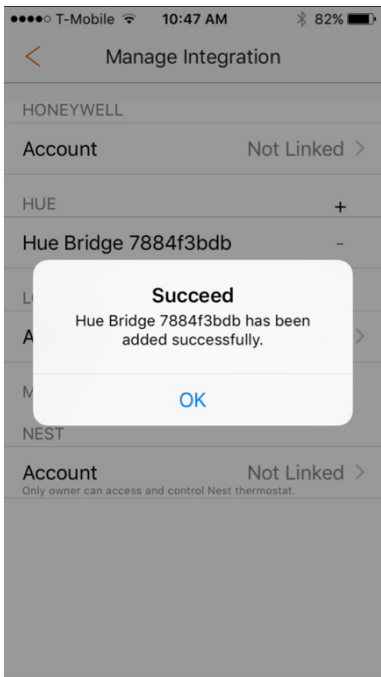
On WWAlarm app, navigate to "Device Management -> OPU/Shuttle settings -> Manage Integration".



Tap the "+" icon next to Hue. Follow the instructions in the WWAlarm app.  
Press the button on the Hue Bridge then tap "OK" button to begin the pairing process.



Once device pairing is successful, you should see the below notification.



## Control Philip Hue system on WWAlarm.

On WWAlarm page, tap on "Energy". Select a Hue Bridge to control remotely from WWAlarm.

